

<b>CUSTOMER:</b>			
<b>DESCRIPTION:</b>	<b>HONDA</b> LINE FILTER	<b>REF NO.:</b>	<b>S110092</b>

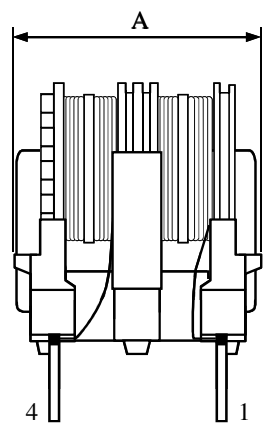
**VERSION:A** | **PAGE:1/2**

**SPECIFICATION**

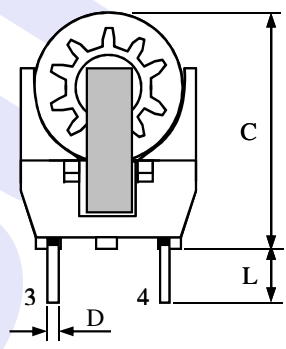
**Compliant RoHS**

**I .PHYSICAL DIMENSIONS (Unit:mm)**

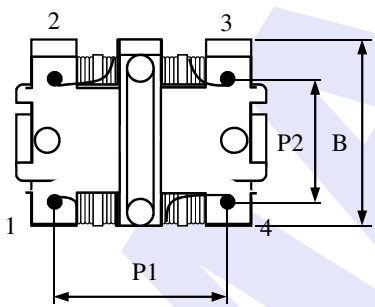
A	B	C	D	L	P1	P2
22.0 max	17.0 max	23.0 max	∅0.8±0.1	4.0±1.0	13.0±0.5	10.0±0.5



Elevation View

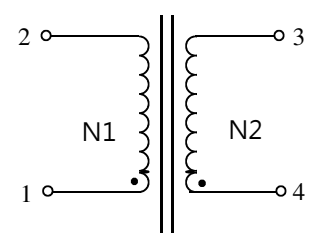


Side View



Bottom View

**II . WINDING GIARAM**



Note: ● Winding start

APP	CHK	DRG
		何自媚

<b>SAMPLE NO.</b>	
<b>MATSUTA NO.</b>	63-1A2018166
<b>SPEC. NO.</b>	TR18166
<b>ISSUE DATE.</b>	2011-5-21

MATSUTA CO.,LTD.  
 Flat 15, 10/F, Block B, Tonic Industrial Centre,  
 19 Lam Hing Street, Kowloon Bay, Hong Kong.  
 Tel: (852) 2796 6693  
 Fax: (852) 2796 3530, 2754 5674  
 E-mail: matsuta@matsuta.com.hk  
 Web site: http://www.matsuta.com

<b>CUSTOMER:</b>	<b>REF NO: S110092</b>		
<b>DESCRIPTION:</b>	UT20 LINE FILTER	<b>VERSION:A</b>	<b>PAGE:2/2</b>

### SPECIFICATION

**Compliant RoHS**

### III. ELECTRICAL PERFORMANCE & CONSTRUCTION

C.D.	START	END	N(Ts)	WIRE (2UEW)	INDUCTANCE	DC RESIST
N1	1	2	150(Ref)	∅0.18mm	55mH min	4.1 Ω max
N2	4	3	150(Ref)	∅0.18mm	55mH min	4.1 Ω max
<b>NOTE</b>	1. Inductance measured by CH-100LCR (1KHz/0.25V).					
	2. DC Resist measured by CH-502AC (at 25°C).					

### IV. MATERIALS LIST:

NO	ITEM	MATERIALS	MANUFACTURER	UL FILE NO
1	BOBBIN	UT-20 PBT 4115 94V-0	CHANG CHUN PLASTICS CO.,LTD.	E59481(S)
2	BASE	UT-20 PHENOLIC T375J 94V-0	CHANG CHUN PLASTICS CO.,LTD.	E59481(S)
3	CORE	UT20 R10K	DMEGC	N/A
4	WIRE	2UEW 130°C	FENG CHING METAL CORP	E172395
5	VARNISH	1032BIH	QUALIPOLY CHEMICAL CORP	E213437
6	SOLDER	SMD1	NIHON GENMA	N/A

APP	CHK	DRG
		何自媚

<b>SAMPLE NO.</b>	
<b>MATSUTA NO.</b>	63-1A2018166
<b>SPEC. NO.</b>	TR18166
<b>ISSUE DATE.</b>	2011-5-21

MATSUTA CO.,LTD.

Flat 15, 10/F, Block B, Tonic Industrial Centre,  
19 Lam Hing Street, Kowloon Bay, Hong Kong.

Tel: (852) 2796 6693

Fax: (852) 2796 3530, 2754 5674

E-mail: matsuta@matsuta.com.hk

Web site: <http://www.matsuta.com>