

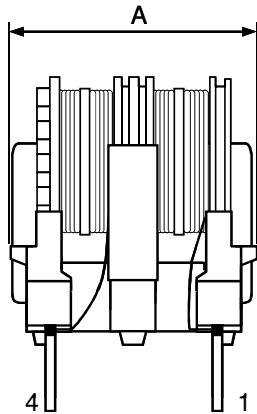
CUSTOMER:		REF NO: S120013
DESCRIPTION:	UT20 LINE FILTER	VERSION: A PAGE:1/2

SPECIFICATION

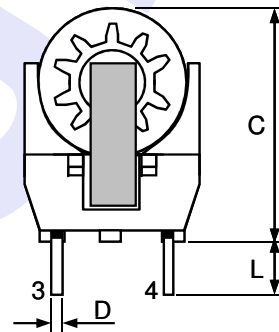
Compliant RoHS

I .PHYSICAL DIMENSIONS (Unit:mm)

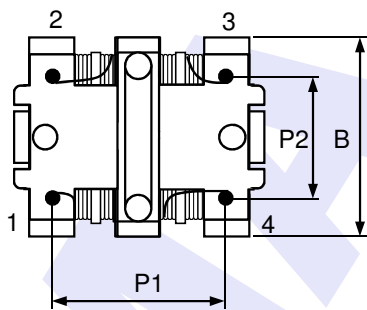
A	B	C	D	L	P1	P2
22.0 max	17.0 max	23.0 max	∅0.8±0.1	4.0±1.0	13.0±0.5	10.0±0.5



Elevation View

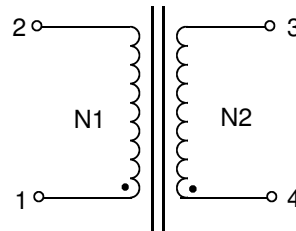


Side View



Bottom View

II .WINDING DIAGRAM



Note: ● Winding start

APP	CHK	DRG
钟明德	王成锋	何玉侃

SAMPLE NO.	
MATSUTA NO.	63-1A2018282
SPEC. NO.	TR18282
ISSUE DATE.	2012-2-15

MATSUTA CO.,LTD.

Flat 15, 10/F, Block B, Tonic Industrial Centre,
19 Lam Hing Street, Kowloon Bay, Hong Kong.

Tel: (852) 2796 6693

Fax: (852) 2796 3530, 2754 5674

E-mail: matsuta@matsuta.com.hk

Web site: <http://www.matsuta.com>

CUSTOMER:	REF NO : S120013		
DESCRIPTION:	UT20 LINE FILTER	VERSION:A	PAGE:2/2

SPECIFICATION

Compliant RoHS

III. ELECTRICAL PERFORMANCE & CONSTRUCTION

C.D.	START	END	N(Ts)	WIRE (UEW)	INDUCTANCE	DC RESIST
N1	1	2	30 Ref	ø0.40mm	3.5mH min	0.28 Ω max
N2	4	3	30 Ref	ø0.40mm	3.5mH min	0.28 Ω max
N O T E	1. Inductance measured by CH-100LCR (1KHz/0.25V).					
	2. DC Resist measured by CH-502AC (at 25°C).					
	3. Rated AC current: 1.3A.					

IV. MATERIALS LIST:

NO	ITEM	MATERIALS	MANUFACTURER	UL FILE NO
1	BOBBIN	UT-20 PBT 4115 94V-0	CHANG CHUN PLASTICS CO.,LTD.	E59481(S)
2	BASE	UT-20 PHENOLIC T375J 94V-0	CHANG CHUN PLASTICS CO.,LTD.	E59481(S)
3	CORE	A121 UT20 OR EQUIVALENT	ACME Electronics Corporation OR EQUIVALENT	N/A
4	WIRE	UEW 130°C	FENG CHING METAL CORP OR EQUIVALENT	E172395
5	VARNISH	1032BIH	QUALIPOLY CHEMICAL CORP	E213437
6	SOLDER	SMD1	NIHON GENMA	N/A

APP	CHK	DRG	SAMPLE NO.	
钟明德	王成锋	何玉侃	MATSUTA NO.	63-1A2018282
			SPEC. NO.	TR18282
			ISSUE DATE.	2012-2-15

MATSUTA CO.,LTD.

Flat 15, 10/F, Block B, Tonic Industrial Centre,
19 Lam Hing Street, Kowloon Bay, Hong Kong.

Tel: (852) 2796 6693

Fax: (852) 2796 3530, 2754 5674

E-mail: matsuta@matsuta.com.hk

Web site: <http://www.matsuta.com>