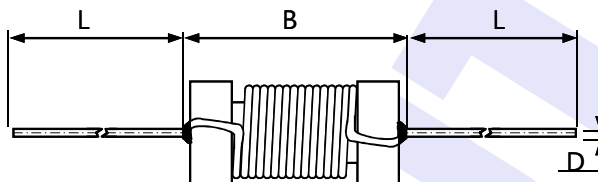
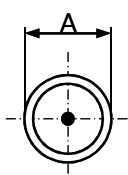


CUSTOMER:		REF NO :	S07484
DESCRIPTION:	AL3012-102K	PAGE:	1/1

SPECIFICATION

DIMENSION: mm



A	3.5 max
B	16.0 max
D	Ø0.6±0.1
L	26.0± 2.0

ELECTRONIC CHARACTERISTICS

INDUCTANCE: 1.0mH±10%
1KHz/0.25V CH-100LCR

DC RESIST: 6.0Ωmax
CH-502AC at 25°C

MATERIALS

CORE: C5A RWW 3×12

WIRE: 2UEW Ø0.1mm

TURNS: 250Ts Ref

VARNISH: 1032BIH

APP	CHK	DRG

SAMPLE NO.	
MATSUTA NO.	61-1110232
SPEC. NO.	CH13251
ISSUE DATE.	2011/09/10

MATSUTA CO.,LTD.

Flat 15, 10/F, Block B, Tonic Industrial Centre,
19 Lam Hing Street, Kowloon Bay, Hong Kong.

Tel: (852) 2796 6693

Fax: (852) 2796 3530, 2754 5674

E-mail: matsuta@matsuta.com.hk

Web site: <http://www.matsuta.com>